



17. Contamination indicators - regional

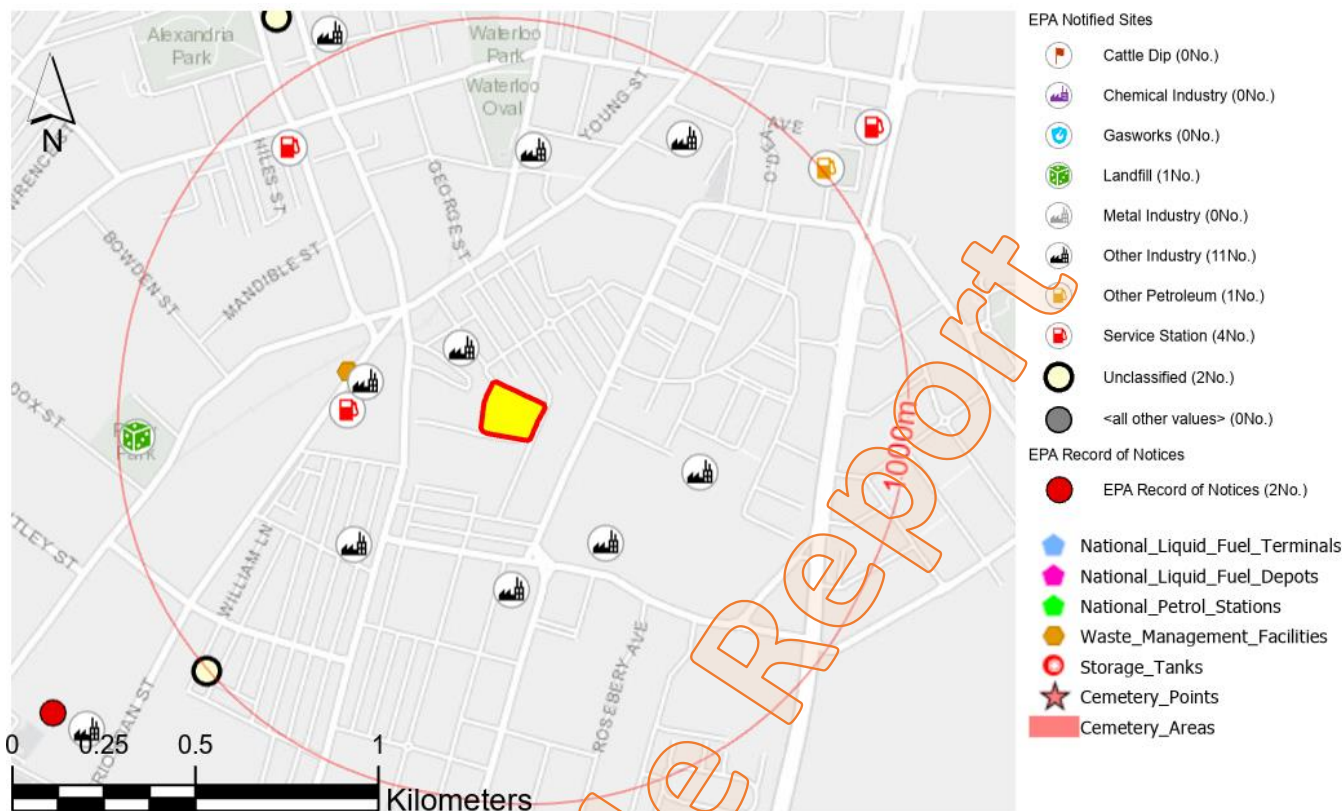




Figure 17.1: Contamination indicators – regional

About this map	Key Plan	Source / Licence / Attribution
<p>This map identifies locations where there is known current or historic contamination or published data on potentially contaminating activities such as fuel depots, energy infrastructure, heavy industry, mining and cemeteries. It provides only an indication of potential contamination at any given site. Contamination data current as of June 2019.</p>		 <p>Source: 1. Esri, DigitalGlobe, GeoEye, i-cubed, USDA FSA, USGS, AEX, Getmapping, Aerogrid, IGN, IGP, swisstopo, and the GIS User Community Other Sources: See below / report</p>
<p>This map shows features and land uses associated with potentially contaminating activities. Sources include:</p> <ol style="list-style-type: none"> Contaminated land - EPA record of notices Contaminated land - List of NSW contaminated sites notified to EPA Geoscience Australia – database of liquid fuel facilities, Geoscience Australia – database of waste management facilities Geoscience Australia - database of naturally occurring asbestos Geoscience Australia - database of oil and gas pipelines Geoscience Australia – database of storage tanks, powerlines, mine areas, cemeteries <p>Further details about each map layer shown are provided below:</p> <p>1. Contaminated land - EPA record of notices The NSW EPA triggers assessment and remediation of significantly contaminated land by sending written notices to those responsible for cleaning up the contamination. The EPA makes these notices, which include preliminary investigation orders, available to the public through the record of notices. The record is updated as notices are issued. Notices will generally appear on the record within 2 weeks of being issued. Refer to the EPA website for further details of each site identified above.</p> <p>2. Contaminated land - List of NSW contaminated sites notified to EPA This database lists NSW contaminated sites notified to EPA which are records under section 58 of the Contaminated Land Management Act, 1997. A site will be on the Contaminated Land: Record of Notices only if the EPA has issued a regulatory notice in relation to the site under the <i>Contaminated Land Management Act 1997</i>. The sites appearing in the list of NSW contaminated sites notified to the EPA indicate that the notifiers consider that the sites are contaminated and warrant reporting to EPA. However, the contamination may or may not be significant enough to warrant regulation by the EPA. For more about the NSW EPA record of notices, see here: https://apps.epa.nsw.gov.au/clm/aboutclmrecord.htm</p>		