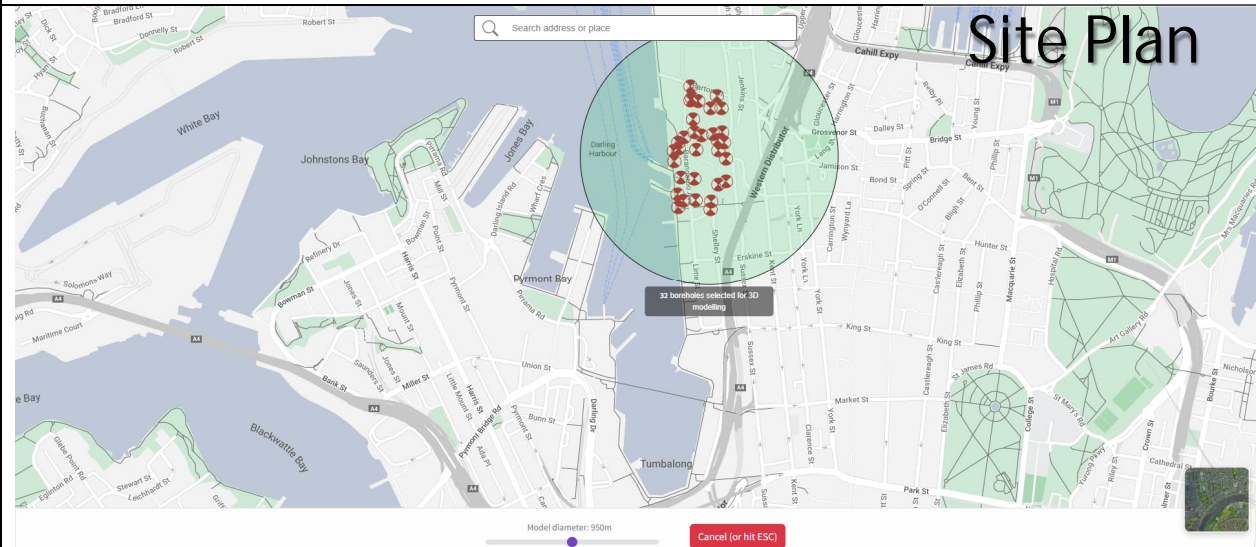


Basic Model



3D Geotechnical Model Viewer

'Virtual Borehole'

Top (mBGL)	Bottom (mBGL)	Geological description
0.00	0.04	Potentially ASPHALT: 0.07mm thick P... show all
0.04	12.97	FILL: GRAVELLY SAND: Medium grain... show all
10.43	16.37	SILTY CLAY: Low plasticity, dark g... show all
13.71	19.54	CLAYEY GRAVELLY SAND: Fine to medi... show all
19.54	19.59	Potentially ASPHALT: 0.06m thick
19.59	22.29	SANDSTONE: Fine to medium grained ...
22.29	26.68	SANDSTONE: Fine to coarse grained,...

Summary Virtual BH BH1 BH2 BH3 BH4 BH5 BH6 BH7 BH8 BH9 BH10 BH11 BH12 BH13 BH14 BH15

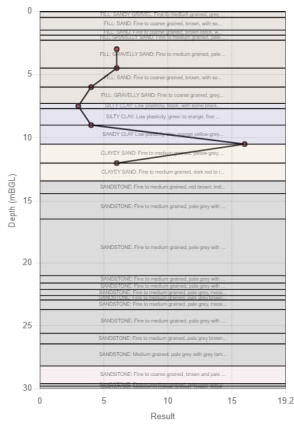
Topography Groundwater Virtual borehole Map Dimensions Settings

Summary of Units

Top (mBGL)	Bottom (mBGL)	Geological description
0.00	0.08	Potentially ASPHALT: 0.07m thick P...
0.08	17.18	FILL: GRAVELLY SAND: Medium grain...
15.85	19.68	SILTY CLAY: Low plasticity, dark g...
16.16	22.05	CLAYEY GRAVELLY SAND: Fine to medi...
22.05	22.29	Potentially ASPHALT: 0.06m thick
22.29	27.05	SANDSTONE: Fine to medium grained ...
26.68	30.49	SANDSTONE: Fine to coarse grained,...

Basic Model

Estimated Soil Parameters



Geology Key data **Parameter correlations** PDF Extra details

Description	Top (mBGL)	Base (mBGL)	Grain type	Grouping (USCS Class)	SPT Avg.	ρ_{bulk} (kN/m ³)	ϕ' (°)	c' (kN/m ²)	c_{ud} (kN/m ²)
FILL: GRAVELLY SAND: Fine to coarse grained, grey, of quartz and basalt, fine to coarse grained angular to sub-angular basalt and sandstone gravel.	6	7.3	Fill	-	4				
SILTY CLAY: Low plasticity, black, with some black timber fragments.	7.3	7.7	Fine	Clay (CH/CL)	3	18.3	22-32	0-5	
SILTY CLAY: Low plasticity, green to orange, fine to medium grained sand, trace of dark red ironstone gravel.	7.7	9	Fine	Clay (CH/CL)	4	18.3	22-32	0-5	
SANDY CLAY: Low plasticity clay, orange yellow-grey and brown, fine to medium grained sand.	9	10.5	Fine	Clay (CH/CL)	NaN				
CLAYEY SAND: Fine to medium grained, yellow-grey, very strong odour of creosote.	10.5	12	Coarse	Sand (SW/SP/SM)	NaN				
CLAYEY SAND: Fine to medium grained, dark red to red-brown, very strong odour of creosote.	12	13.41	Coarse	Sand (SW/SP/SM)	6	17.1-21.2	32-37	0	
SANDSTONE: Fine to medium grained, red brown, indistinctly bedded at 10 to 30	13.41	14.4	Rock	-					