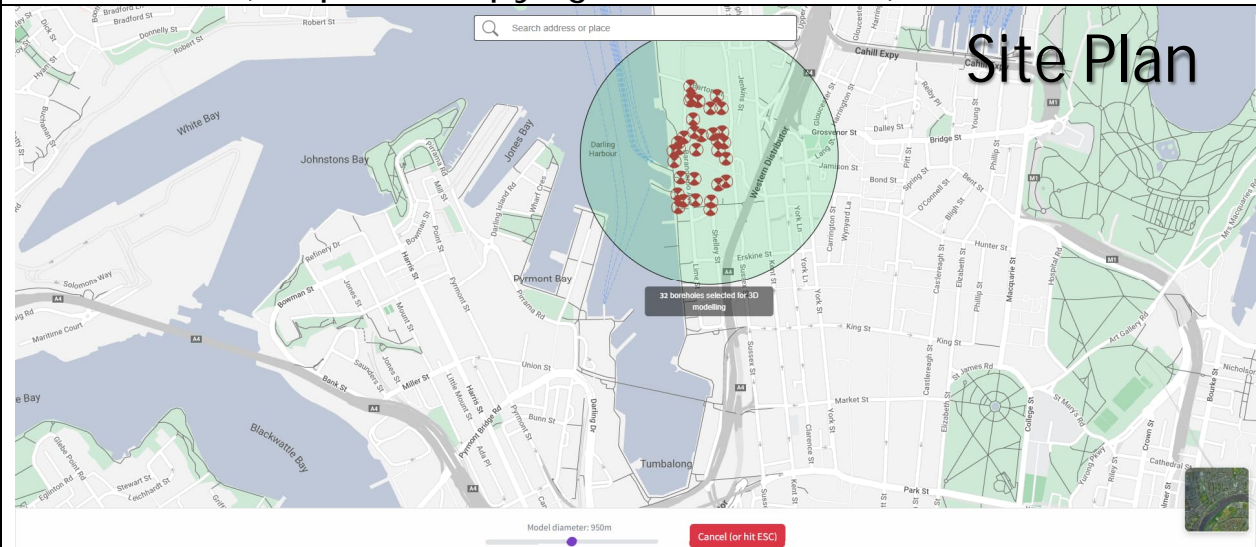


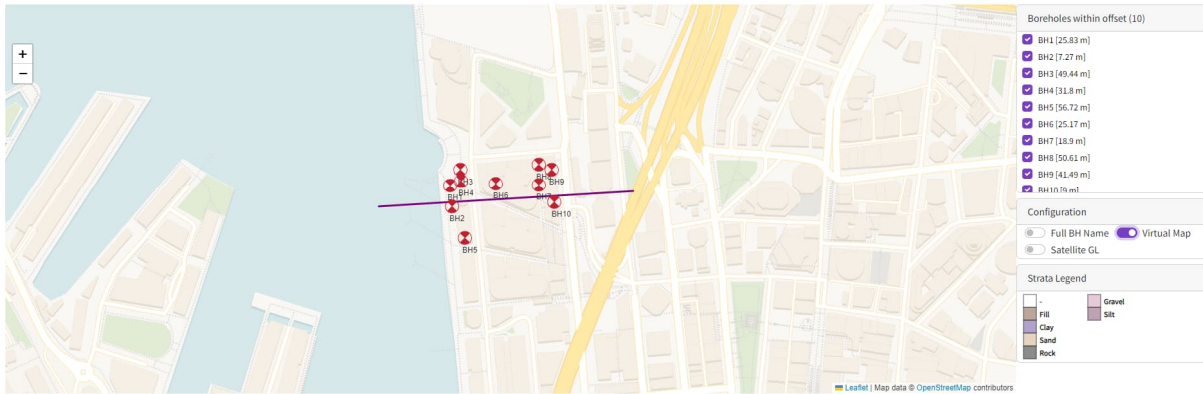
Full Model (Requires Copyright-free Dataset)

Site Plan



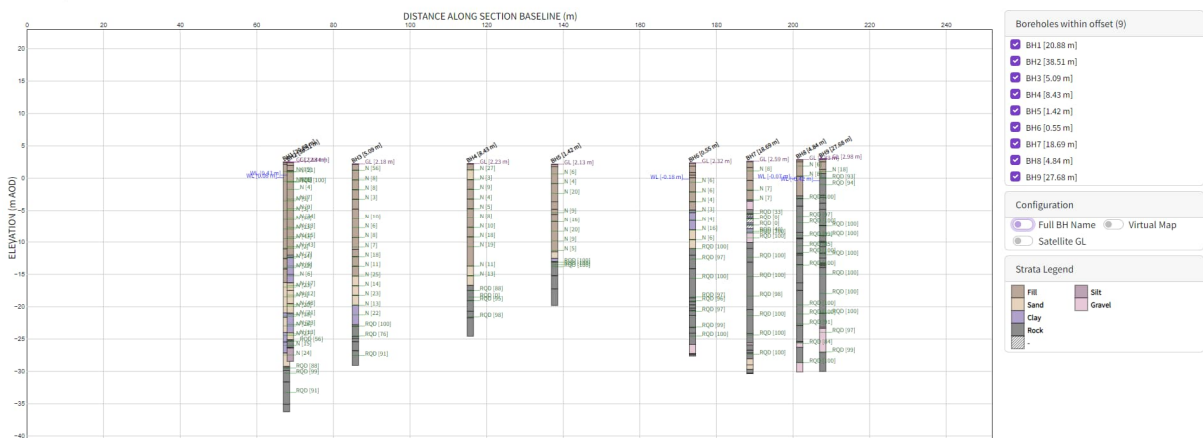
Cross Section - Site Plan

2D Geological Section



Cross Section - Elevation

2D Geological Section



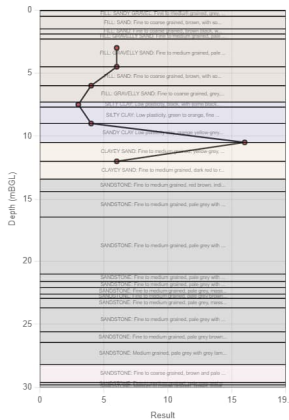
Full Model (Requires Copyright-free Dataset)

'Virtual Borehole'

3D Geotechnical Model Viewer

Top (mBGL)	Bottom (mBGL)	Geological description
0.00	0.04	Potentially ASPHALT: 0.07mm thick P...
0.04	12.97	FILL: GRAVELLY SAND: Medium graine...
10.43	16.37	SILTY CLAY: Low plasticity, dark g...
13.71	19.54	CLAYEY GRAVELLY SAND: Fine to medi...
19.54	19.59	Potentially ASPHALT: 0.06m thick

Estimated Soil Parameters



Description	Top (mBGL)	Base (mBGL)	Grain type	Grouping (USCS Class)	SPT Avg.	P _{bulk} (kN/m ²)	φ ^o (°)	C ^o (kN/m ²)	C _{ud} (kN/m ²)
FILL: GRAVELLY SAND: Fine to coarse grained, grey, of quartz and basalt, fine to coarse grained angular to sub-angular basalt and sandstone gravel.	6	7.3	Fill	-	4				
SILTY CLAY: Low plasticity, black, with some black timber fragments.	7.3	7.7	Fine	Clay (CH/CL)	3	18.3	22-32	0-5	
SILTY CLAY: Low plasticity, green to orange, fine to medium grained sand, trace of dark red ironstone gravel.	7.7	9	Fine	Clay (CH/CL)	4	18.3	22-32	0-5	
SANDY CLAY Low plasticity clay, orange yellow-grey and brown, fine to medium grained sand.	9	10.5	Fine	Clay (CH/CL)	NaN				
CLAYEY SAND: Fine to medium grained, yellow-grey, very strong odour of creosote.	10.5	12	Coarse	Sand (SW/SP/SM)	NaN				
CLAYEY SAND: Fine to medium grained, dark red to red-brown, very strong odour of creosote.	12	13.41	Coarse	Sand (SW/SP/SM)	6	17.1-21.2	32-37	0	
SANDSTONE: Fine to medium grained, red brown, indistinctly bedded at 10 to 30	13.41	14.4	Rock	-					

Data Export

HEADING	LOCA_ID	GEOL_TOP	GEOL_BASE	GEOL_DESC	GEOL_LEG	GEOL_FORMA
UNIT	20P	20P				
TYPE	BAR32	0.00	0.10	FILL ASPHALT/CONCRETE	X	X
DATA	BAR32	0.10	1.50	FILL: GRAVELLY SAND: Medium to coarse grained, brown, fine to medium grained sub-angular grey gravel, with some clay.		404
DATA	BAR32	1.50	4.20	FILL: CLAYEY SAND: Fine to medium grained, orange-brown white and red with some sandstone gravel and timber fragments.		402
DATA	BAR32	4.20	11.50	FILL: GRAVELLY SAND: Fine to medium grained, grey brown, with some sandstone cobbles, red brick fragments and some clay. Becoming orange-brown. With a red brick cobble (100mm).		404
DATA	BAR32	11.50	13.30	SANDY CLAY: High plasticity, orange-brown, fine to medium grained sand. Becoming pale grey mottled orange-brown and red.		203 CH
DATA	BAR32	13.30	13.40	SAND: Medium to coarse grained, orange-brown and pale grey with some orange-brown clay.		201 SP
DATA	BAR32	13.40	14.80	SANDY CLAY / CLAYEY SAND: High plasticity clay, medium grained sand, pale grey.		402 CH/SC
DATA	BAR32	14.80	16.40	SAND: Fine to medium grained, pale grey, red-brown and orange-brown, with some clay.		201 SP
DATA	BAR32	16.40	17.60	SANDSTONE: Fine to medium grained, pale grey white and red-brown, extremely to highly weathered, washed, very low to low strength.		
DATA	BAR32	17.60	18.40	SANDSTONE: Fine to medium grained, red-brown and orange-brown, indistinctly bedded at 0' to 10', 100-100 (30) becoming pale grey, mottled red and orange.		
DATA	BAR32	18.40	24.00	SANDSTONE: Fine to medium grained, pale grey, massive to indistinctly bedded with carbonaceous flecks.		

	A	B	C	D
	Northing	Easting	Layer Base	Unit
1595	-33.86201	151.20333	-8.36	Clay (CH/CL)
1596	-33.86201	151.20355	-7.2	Clay (CH/CL)
1597	-33.86201	151.20355	-7.82	Clay (CH/CL)
1598	-33.86201	151.20377	-6.8	Clay (CH/CL)
1599	-33.86201	151.20377	-7.37	Clay (CH/CL)
1600	-33.86201	151.20398	-6.44	Clay (CH/CL)
1601	-33.86201	151.20398	-6.98	Clay (CH/CL)
1602	-33.86543	151.19987	-16.85	Sand (SW/SP/SM)
1603	-33.86543	151.19987	-24.29	Sand (SW/SP/SM)
1604	-33.86543	151.20008	-16.44	Sand (SW/SP/SM)
1605	-33.86543	151.20008	-23.7	Sand (SW/SP/SM)
1606	-33.86543	151.2003	-15.95	Sand (SW/SP/SM)
1607	-33.86543	151.2003	-23.01	Sand (SW/SP/SM)
1608	-33.86543	151.20052	-15.38	Sand (SW/SP/SM)
1609	-33.86543	151.20052	-22.2	Sand (SW/SP/SM)
1610	-33.86543	151.20073	-14.72	Sand (SW/SP/SM)

